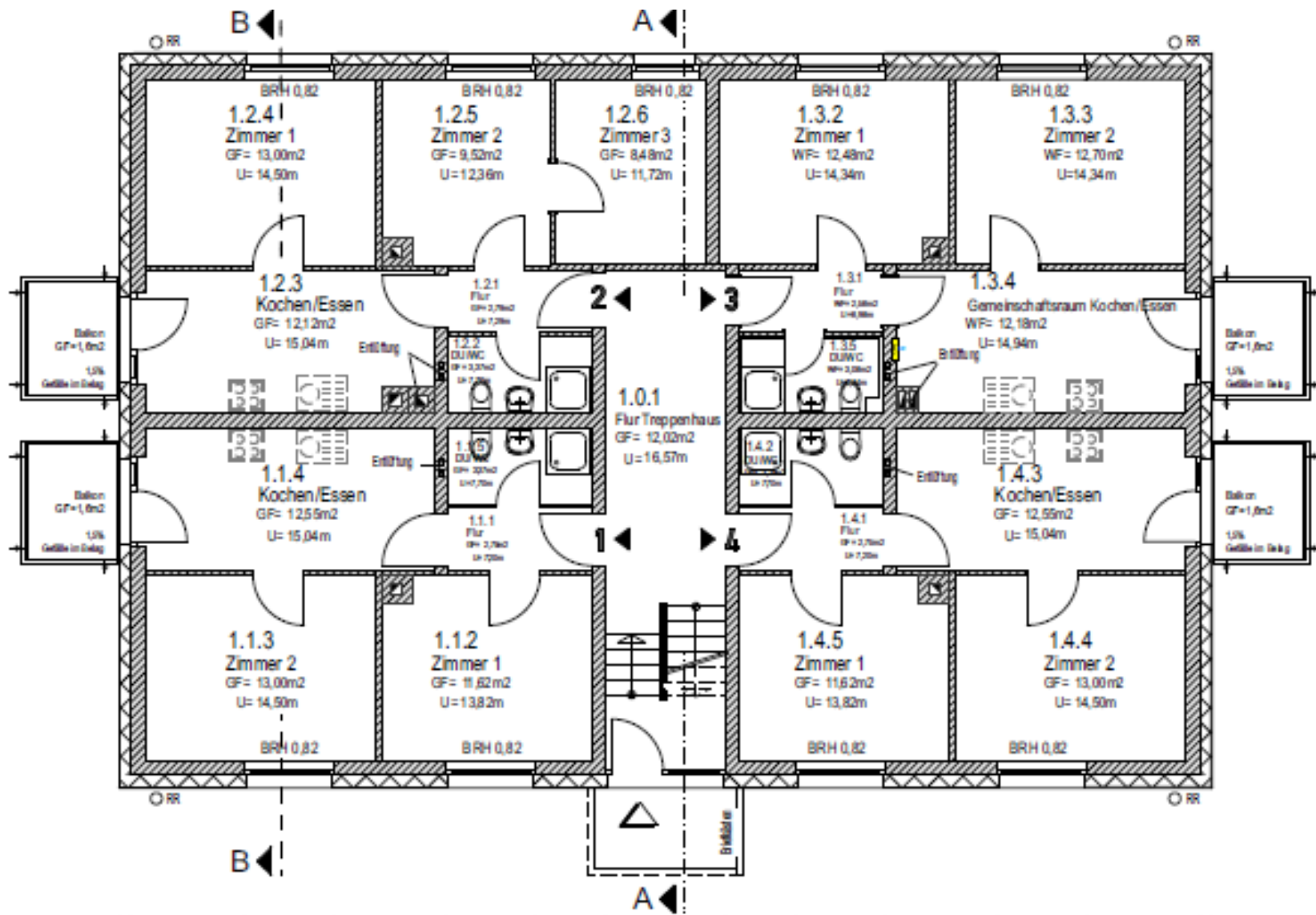




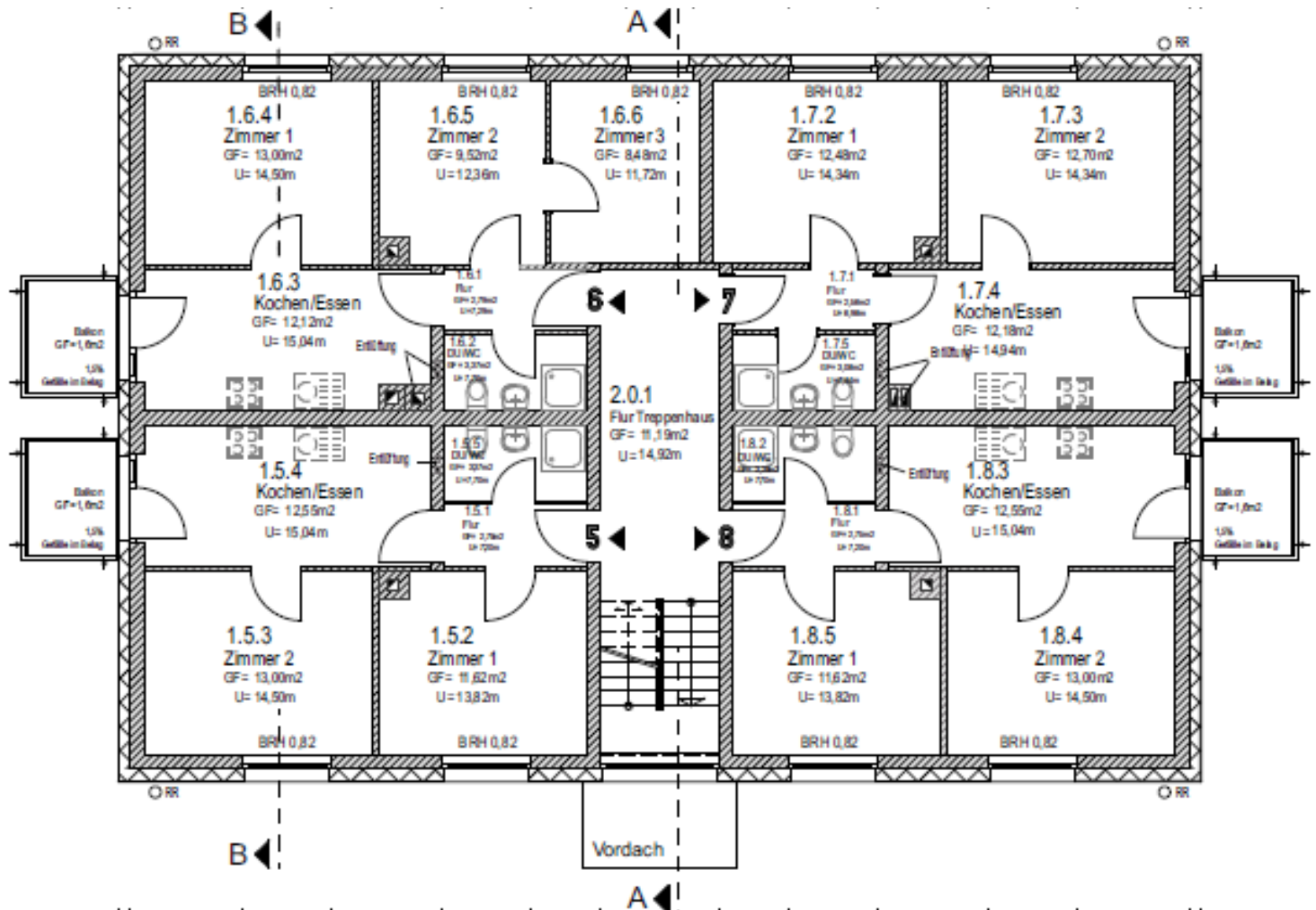
Lageplan mit Ergänzungen

Wohngebäude Ziegelstraße 46 + 50
Energetische Sanierung

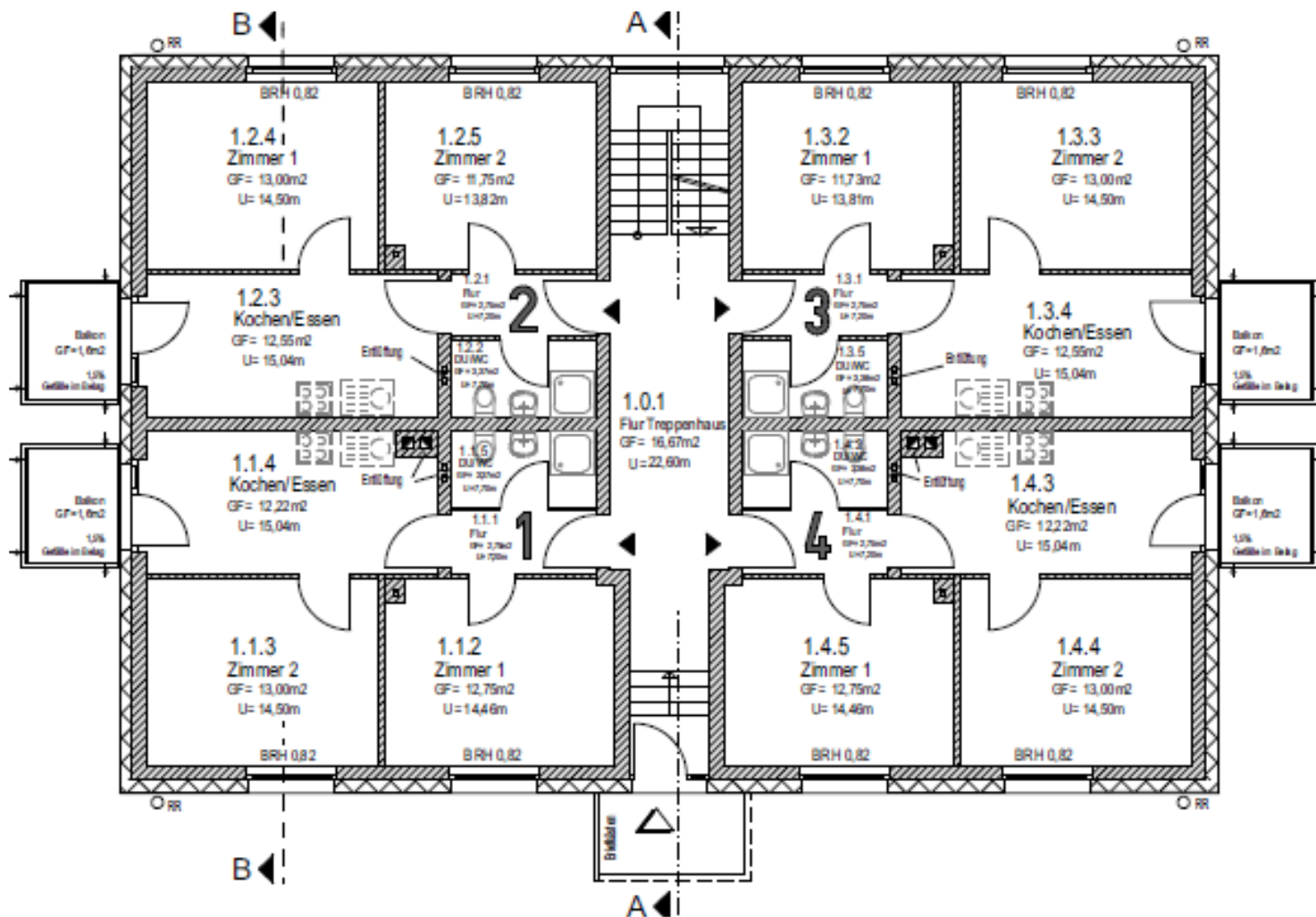


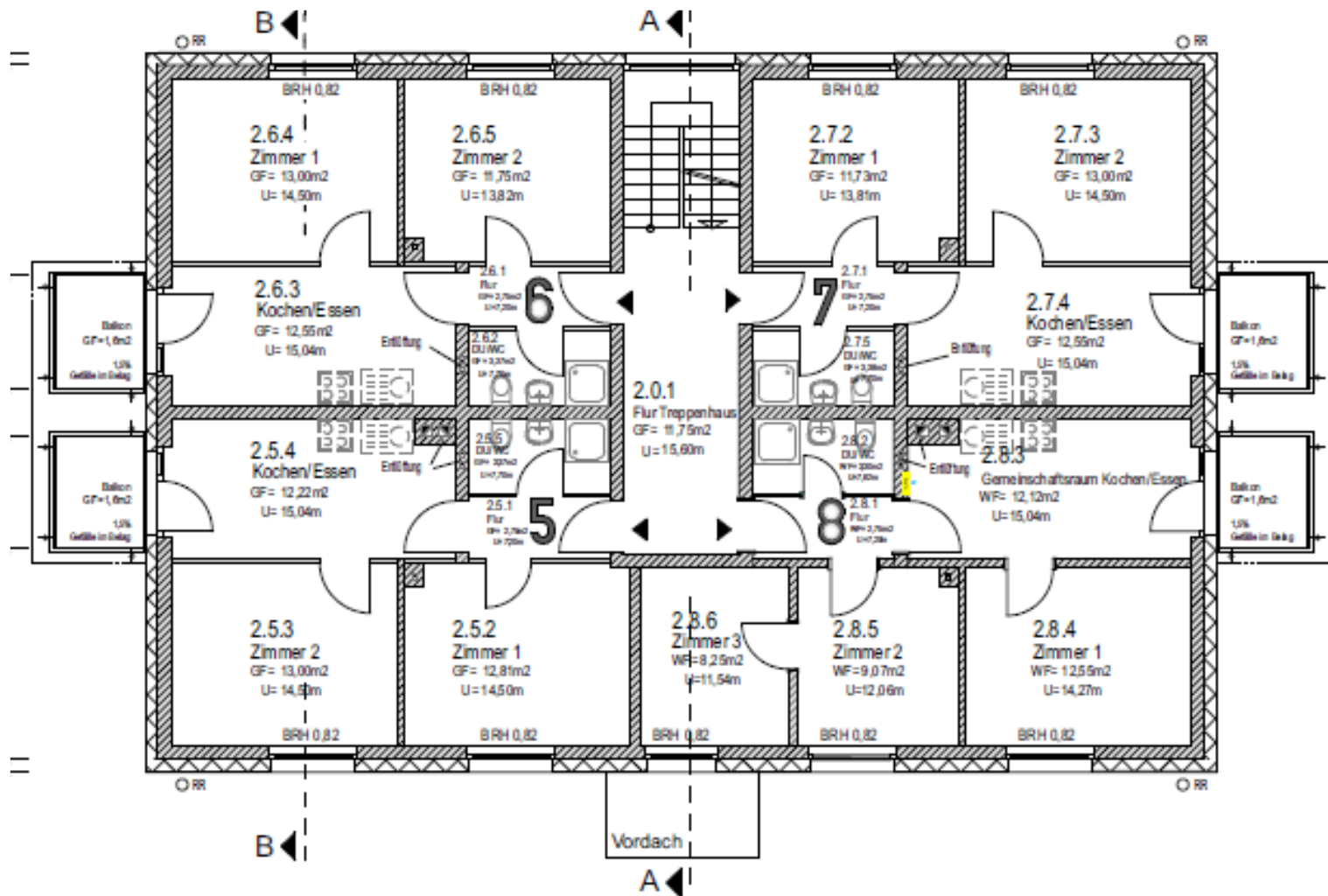
Grundriss EG Haus Nr. 46

Wohngebäude Ziegelstraße 46 + 50
Energetische Sanierung



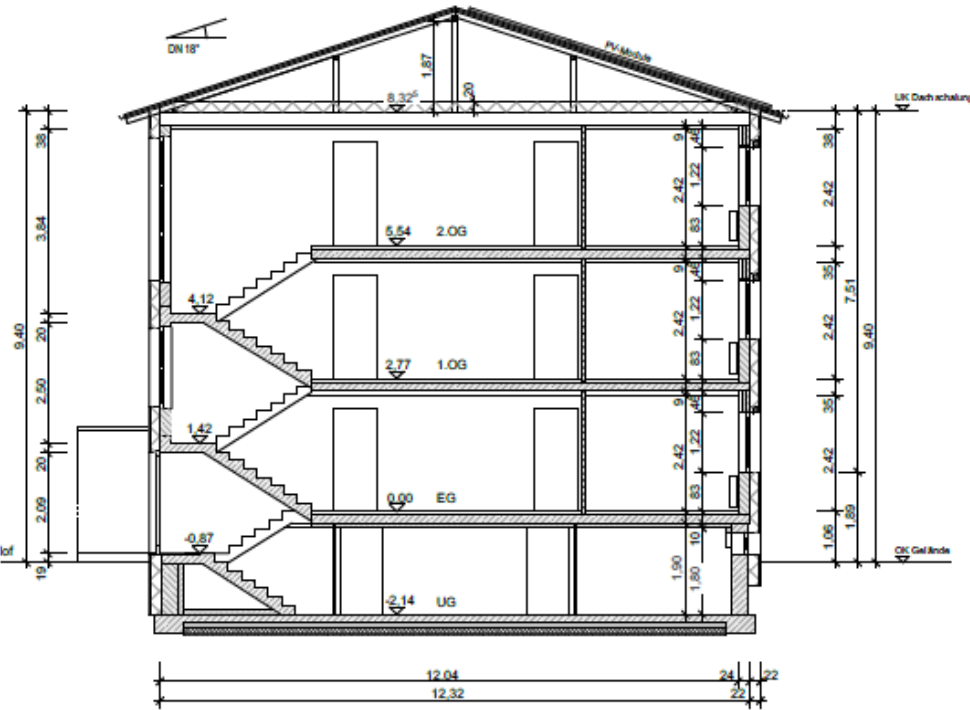
Grundriss Obergeschoss Nr. 46



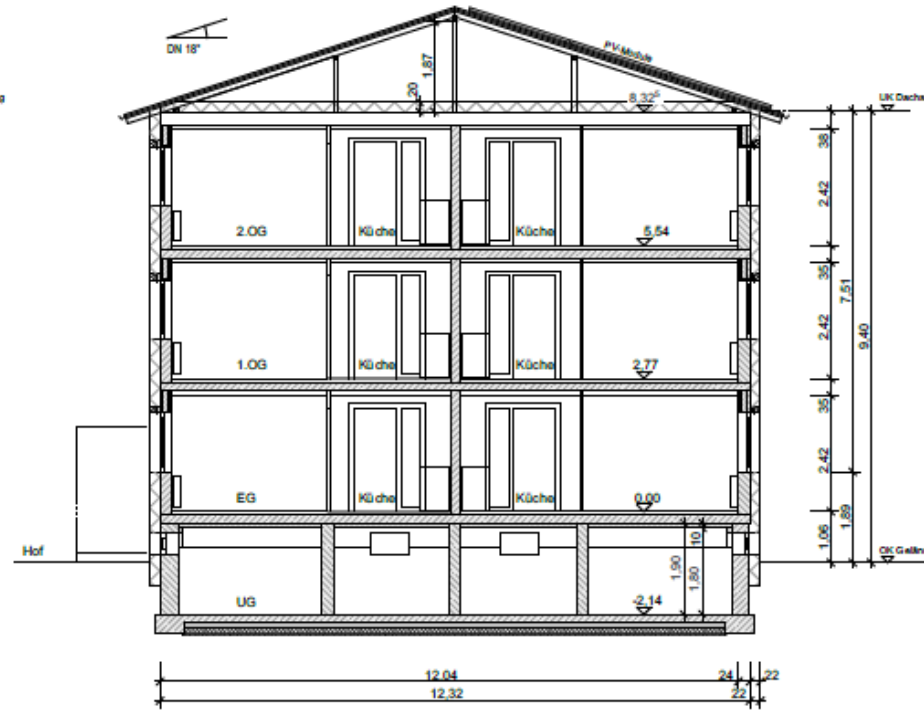


Grundriss OG Haus Nr. 50

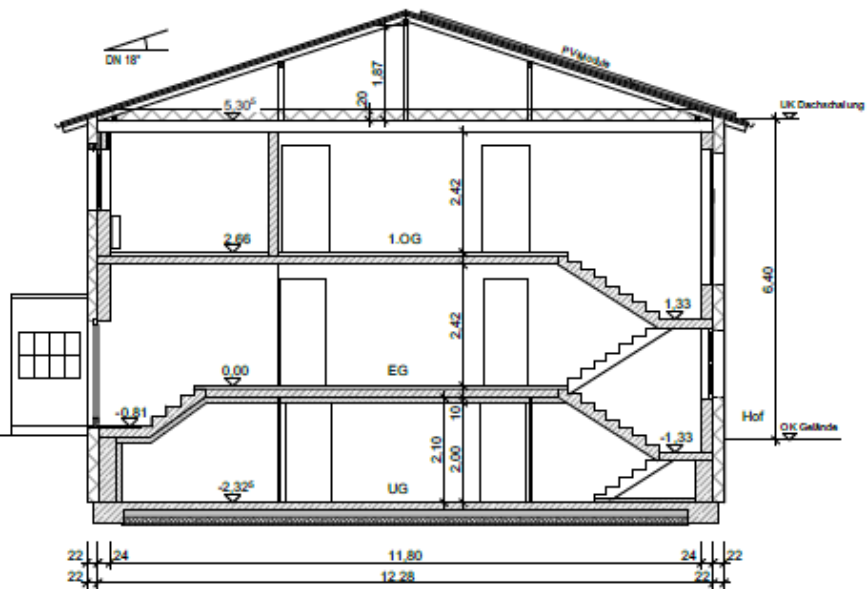
Wohngebäude Ziegelstraße 46 + 50
Energetische Sanierung



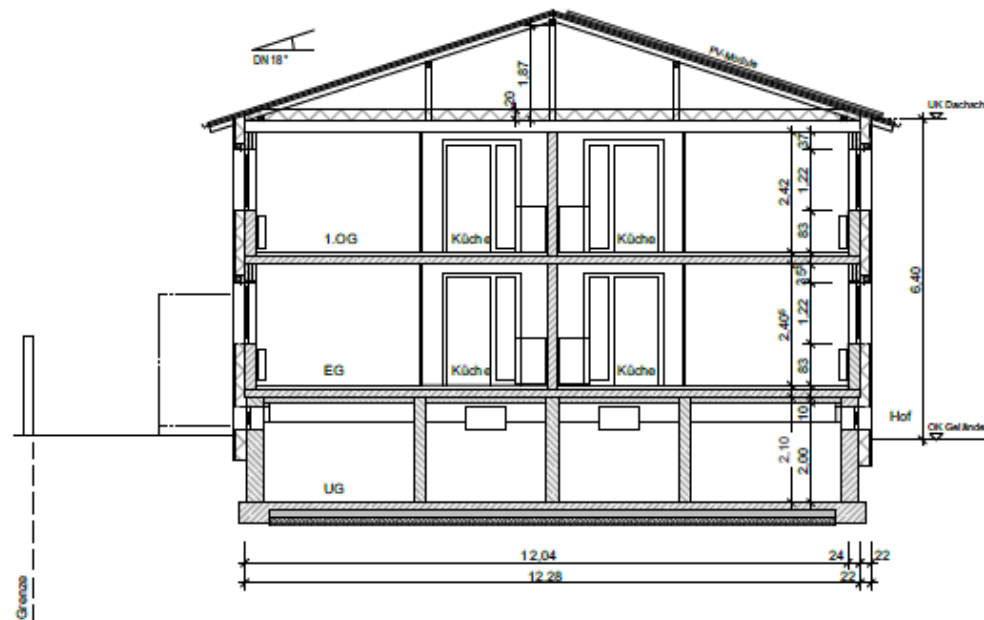
Schnitt A-A Haus 46



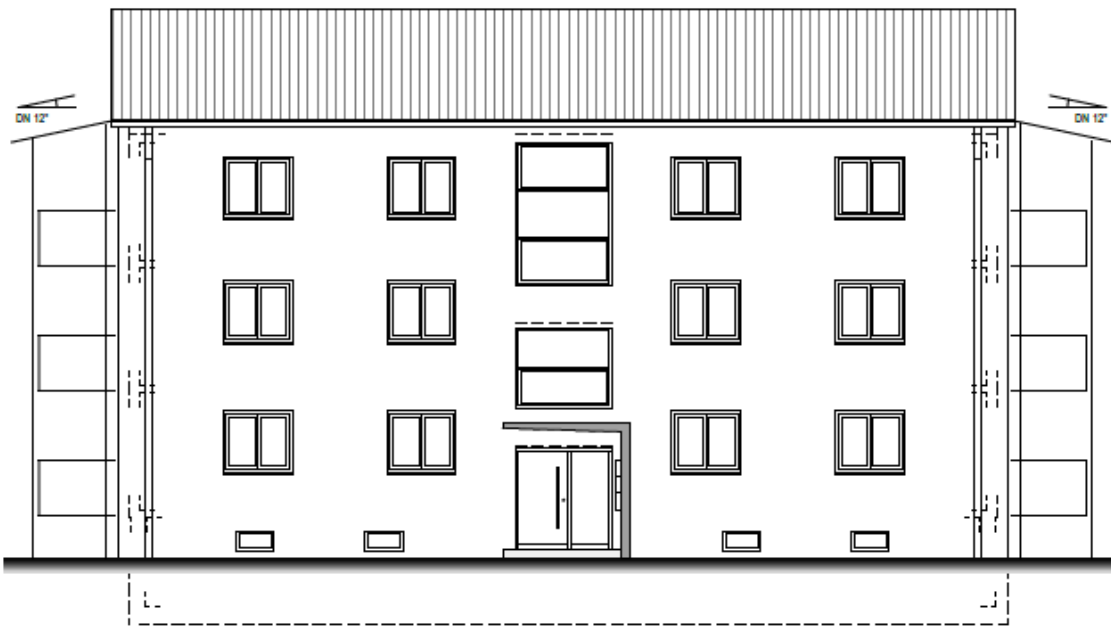
Schnitt B-B Haus 46



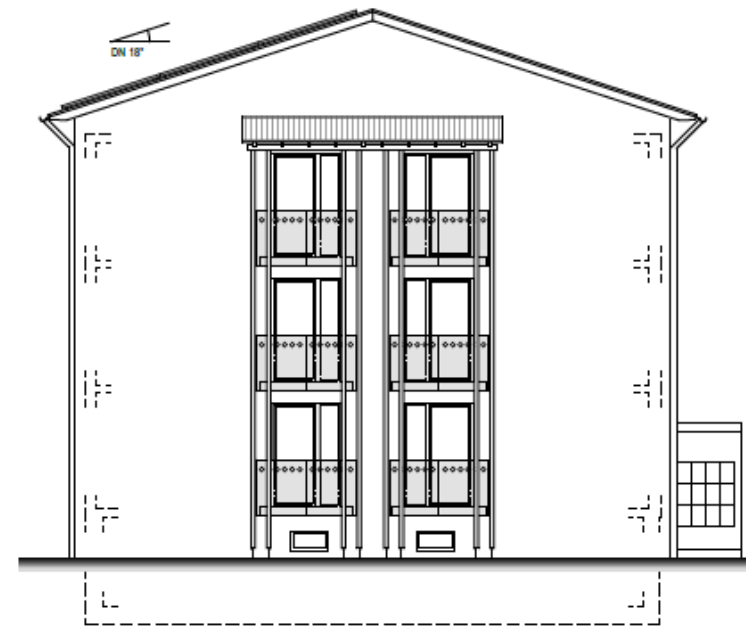
Schnitt A-A Haus 50



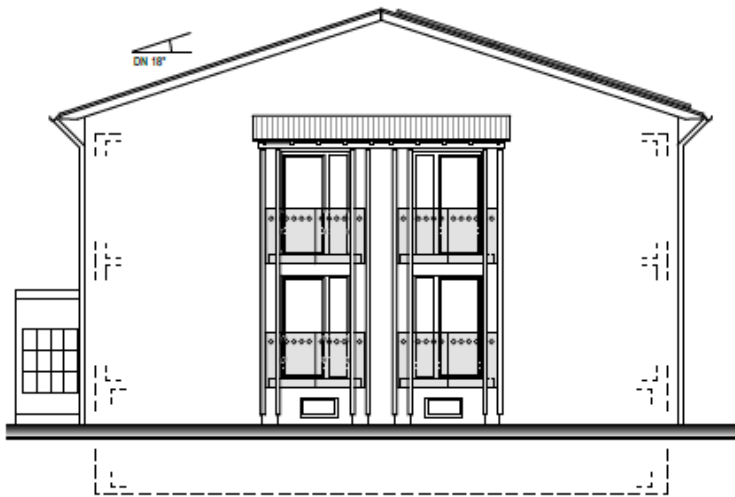
Schnitt B-B Haus 50



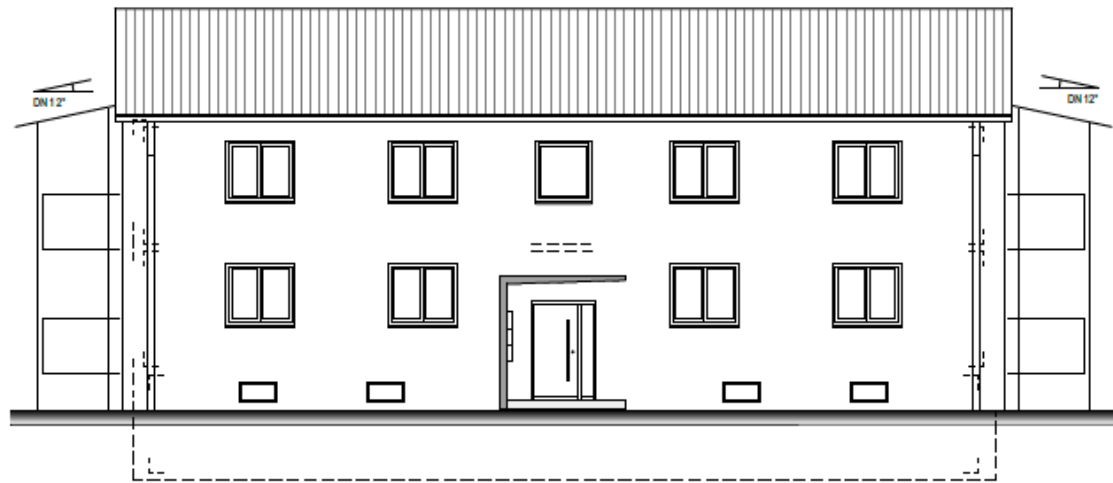
ANSICHT NORD



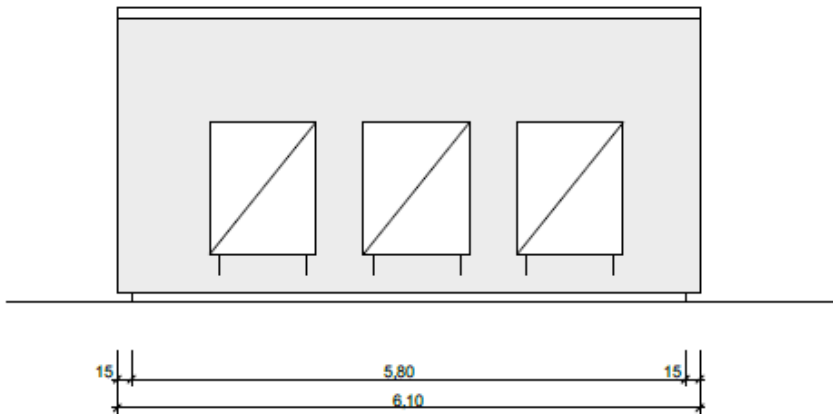
ANSICHT OST



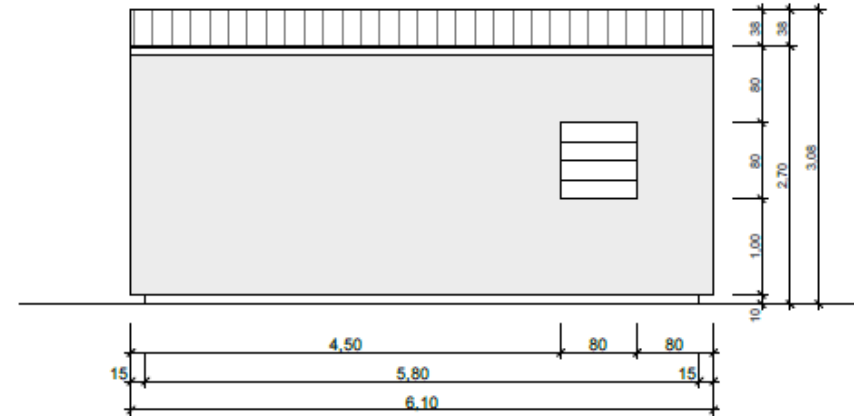
ANSICHT NORD



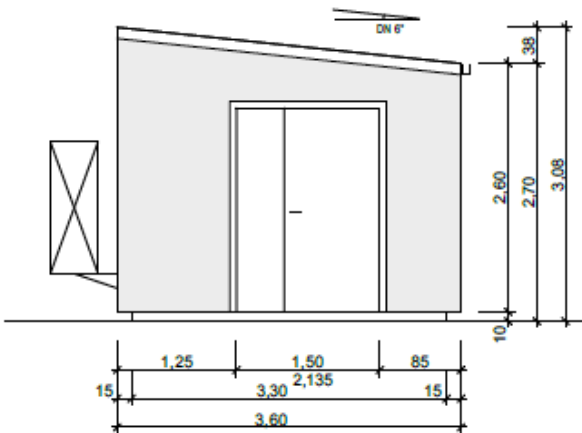
ANSICHT OST



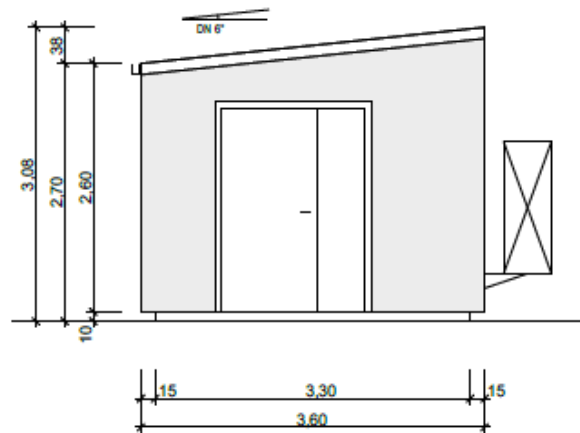
Südansicht



Nordansicht



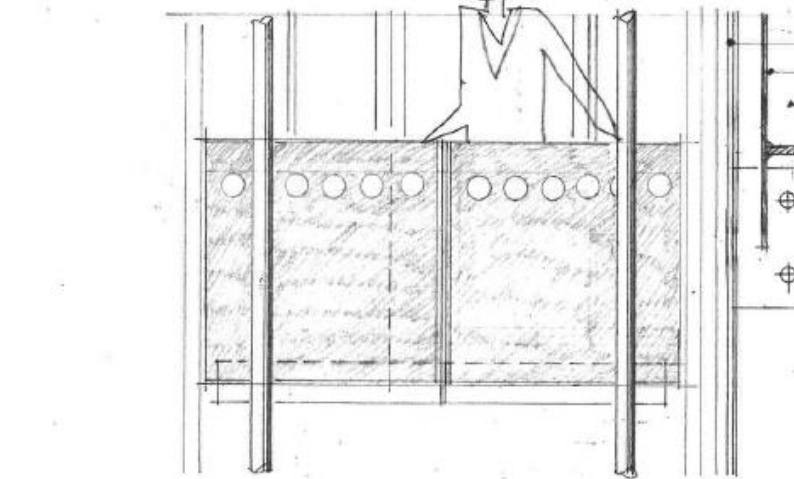
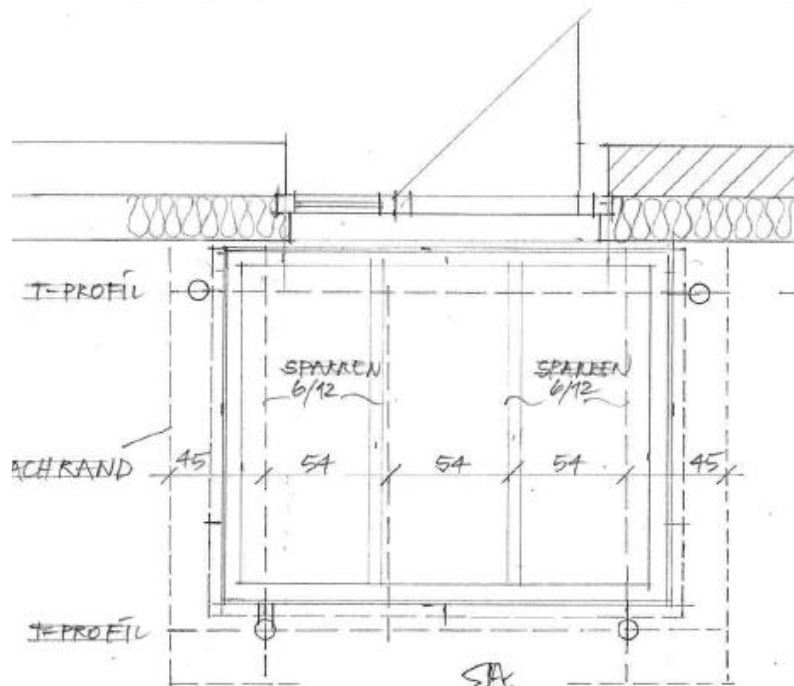
Ostansicht



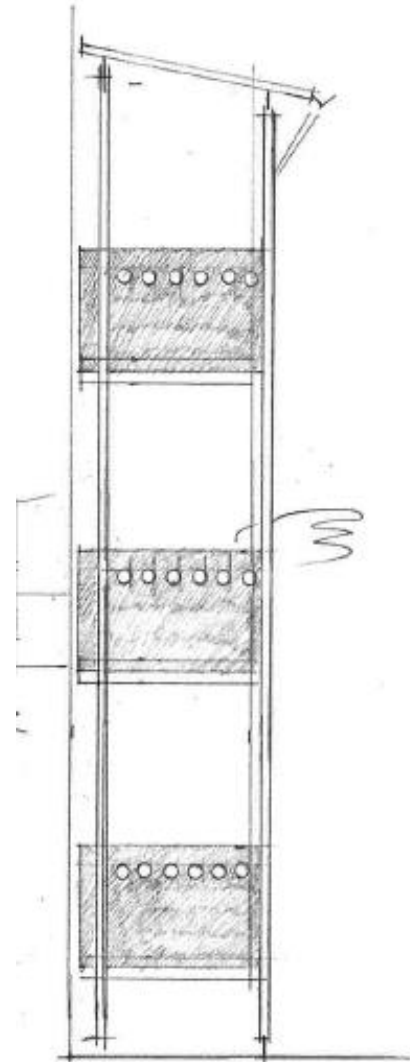
Westansicht

Energetische Sanierung
Ziegelstraße 46 + 50 69190 Walldorf





GRUNDRISS + ANSICHT M 1:20



SEITENANSICHT
M 1:50

Balkone vorgestellt

Wohngebäude Ziegelstraße 46 + 50
Energetische Sanierung